

LATERAL MAIN CONNECTION

FORMADRAIN® LMC Structural Liner Fact Sheet

“T & Y Connection Lining is Now A Municipal Requirement...”

Here's The All-In-One Lining System:

LMC (T & Y CONNECTIONS) ■ POINT (SPOT - SECTIONAL - SHORT) REPAIR ■ LATERAL LINING
INDUSTRIAL LINING ■ MAN-HOLE TO MAN-HOLE ■ HIGH PRESSURE PIPES

The FORMADRAIN Liner has been in constant use since 1994 for rehabilitating laterals, point repairs and for man-hole to man-hole lining. The Liner has proven itself under repeated use across North America, and is known for its high quality control during installation and for its exceptionally high mechanical properties.

Quality Assurance:

Quality is assured by our complete on-site training program, as well as our standardised Procedure Manual. The technical aspects of the FORMADRAIN Liner itself also assure quality through the use of steam heat-curing system. With our steam-curing process the Liner cure rate of is completely controlled.

Steam Curing:

Although we were the first to use a steam-curing process, due to the pressures of today's market virtually every other lining company has come to the same conclusion – that ambient curing is too inefficient.

We've been using a heat-cured process from the beginning and have perfected the system through 14 years of rigorous use.

Flexibility To Suit Your Needs:

T & Y Lining can be achieved at three levels: residential, municipal and industrial. Sizes may vary from a 6" (150 mm) main combined with a 4" (100 mm) lateral, up to a 24" (600 mm) main combined with a 8" (200 mm) lateral.

MUNICIPAL APPLICATIONS:

T & Y Applications Are A Must When Renewing A Complete Sewer Network Without Digging!

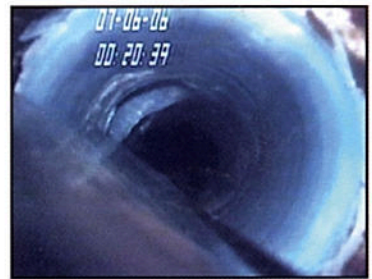
BEFORE LMC (Tee-Lining)

Main View:

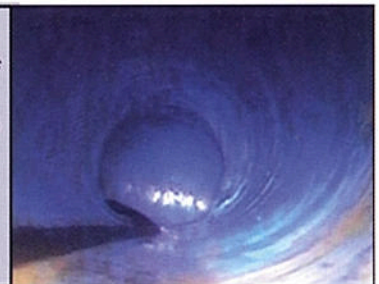


AFTER LMC (Tee-Lining)

Main View:



Lateral View Of
FORMADRAIN's
LMC (Tee-Lining):



RESIDENTIAL APPLICATIONS:

Before



After



www.formadrain.com

To Find Out More Call Today:
Toll Free (888) 337-6764

FORMADRAIN®



DWW/Sewer

LATERAL MAIN CONNECTION Case Study

Molson Breweries Utilizes FORMADRAIN Technology To Repair Underground Pipes With Zero Downtime And Reduced Costs...

Industry today has a growing problem: Every day many infrastructures are getting older and more and more are in need of repair – especially underground pipes which are expensive to repair with traditional methods that involve digging. In this case study we look at a company that saved a lot of time and money, with no loss of productivity through FORMADRAIN.

The Case of Molson Breweries:

Molson Breweries, founded in 1786, is a major brewery in the world and owns the oldest beer brand in North America. Their production facilities are expansive and produce at high volume daily. Underneath the industrial plant is a network of cast iron sewer pipes, many decades old and suffering from premature corrosion inherent in the beer-making process. When these needed repairs, shutting the plant down was not a viable option due to production demands. Moreover, repair costs for traditional repairs would have been extensive as the plant floor would have to be dug up. To make matters worse, there were areas where it was simply impossible to dig. To overcome these problems Molson chose a no-dig solution. FORMADRAIN Technology was selected to achieve the renewal of Molson Sewer Network — and the project was a success.

Specifics:

This project involved repairing an extensive sewer network of cast iron pipes suffering from heavy corrosion – some pipes had no bottom in several spots. As no pictures were allowed inside the plant, to protect trade secrets, a sketch was created (see diagram) that shows the large cellar, including 8 feet diameter by 25 feet long beer tanks.

It was practically impossible to remove the tanks to dig and replace the cast iron pipes underneath. Additionally, under the tanks there was a double-layer concrete slab so digging was not an option in any case. The project involved repairing lengths of pipe up to 300 feet (90 meters) by 4 to 8 inches (100 - 200 mm) in diameter.

The pipe system included eight “Y” connections (floor drains and lateral connections) that had to be renewed.

Prior to installation, the existing pipes were properly prepared (this is as important as the lining itself). This included deep cleaning (with standard and high water pressure equipment) to remove some soft and other very hard residues (concrete).

Total Success:

All the pipes were completely renewed with FORMADRAIN’s exclusive No-Dig system, the project was completed with total success.

The use of a Novalac Epoxy resin will assure a life expectancy* of 50 years in industrial use.

To find out how the FORMADRAIN system can work for you, give us a call today at (888) 337-6764. ■

INDUSTRIAL APPLICATIONS:



The FORMADRAIN Y-Liner combined with the specially-formulated FORMAPOX 301 Industrial Liner (A Novalac-base Epoxy Resin) can resist very strong acids, caustics and petroleum products, at temperatures up to 250° F.

